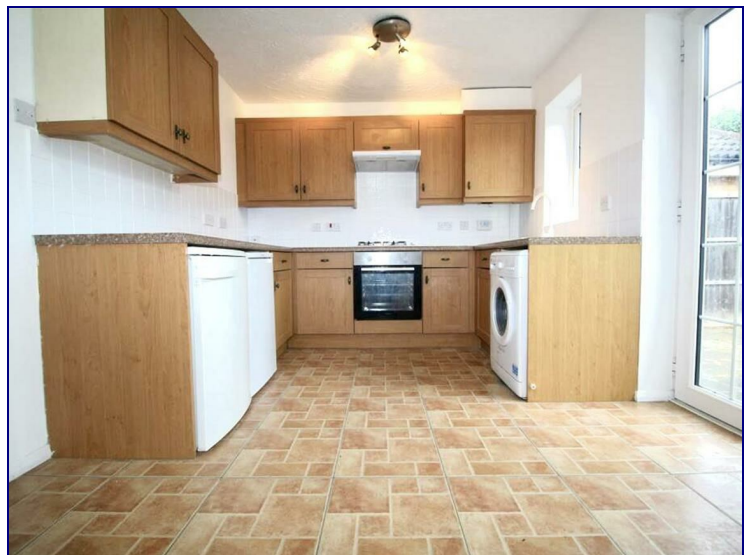
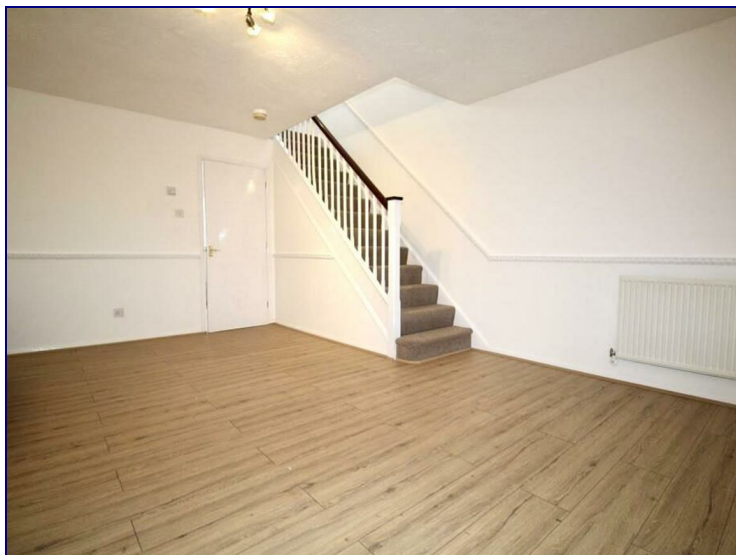


Roberts Close, Hertfordshire, EN8 9RY



£2,000 PCM

Three Bedroom Detached House, Available Now.

Occupants will benefit from OFF STREET PARKING and GARAGE.

The first floor offers a spacious lounge, fitted kitchen/diner leading to a family size garden and downstiairs W/C. Side access is available to the garden aswell as rear access to the garage. The second floor includes two double bedrooms with En-suite to master, one single bedroom and a three piece family bathroom suite.

This property is conveniently located within walking distance to Cheshunt Rail Station (0.3 miles) and High Street offering an array of shops and restaurants. The old pond also offers other amenties such as the Laura Trott



